

# ELECTRIC RAILCAR MOVERS



Efficient. Economical. Environmental.

 **SHUTTLEWAGON**  
POWERED BY COLMAR

SHUTTLEWAGON.COM



 **SHUTTLEWAGON**  
POWERED BY COLMAR



SHUTTLEWAGON OFFERS THE WIDEST

# ELECTRIC RAILCAR MOVERS

For almost 50 years Shuttlewagon, headquartered in Kansas City, MO, has been a leader in the railcar mover industry. Our success comes from our commitment to quality and

Railroad companies, metros, ports, warehousing companies, chemical and refining plants, cement facilities, and the grain and feed industry can now improve their operational efficiency using Shuttlewagon's new line of zero-emission movers.

The compact electric series are easy to operate, require low maintenance, and are efficient and powerful enough to handle the most demanding applications. Shuttlewagon's compact electric models range in power from 310 tons of towing capacity up to 4,000 tons. For more robust applications requiring battery power, the Navigator NVXe can move up to 40 loaded or empty railcars.

Shuttlewagon railcar movers are suitable for operating in every condition, achieving high safety standards, high maneuverability and rapid on and off tracking in most areas. Shuttlewagon's tire technology allows the units to cross tracks to perform cross terminal movements quickly and efficiently.



SELECTION OF MOBILE RAILCAR MOVERS



SHUTTLEWAGON is focused on innovation. Our engineers support clients when a customized solution is required, working to innovate and utilize new technology to create the highest quality products that are safe, easy to use, and improve your business.

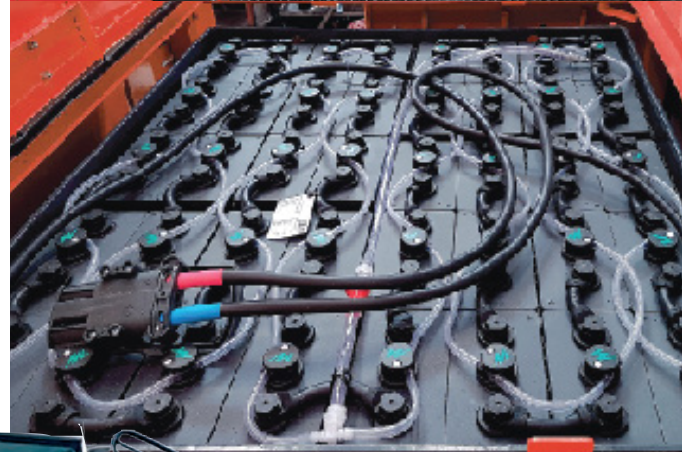
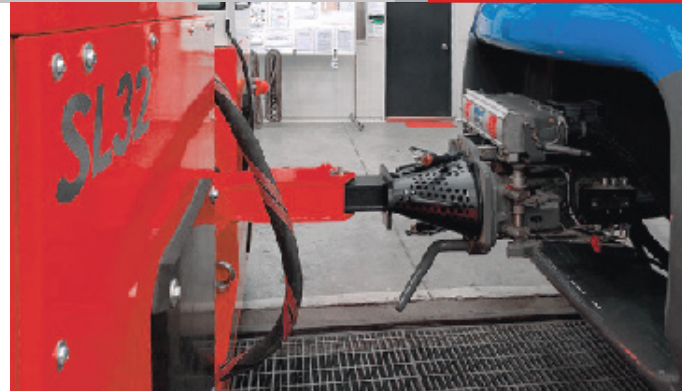
- ▶ **LOW OPERATING COSTS:** Electric Vehicles are dramatically cheaper to fuel than their Diesel counterparts. The cost of the electricity has remained fairly static over the last decade, whereas the global oil market has caused the average price of gasoline to rise, drop, spike, dip, and rise again over the same time period.
- ▶ **LOW MAINTENANCE COSTS:** Despite being an advanced technology, Electric vehicles are remarkably simple to maintain. Electric motors have fewer moving parts compared to Diesel engines and they do not require changing filters or hydraulic oil.



SHUTTLEWAGON RAILCAR MOVERS ARE SUITABLE FOR OPERATING IN EVERY CONDITION, ACHIEVING HIGH SAFETY STANDARDS HIGH MANEUVERABILITY AND RAPID ON AND OFF TRACKING IN MOST AREAS.

# BE EFFICIENT, GO GREEN!

- ▶ **PERFORMANCE:** An electric engine generates instant torque (or turning force) whereas an internal combustion motor has a curve of torque that increases in tandem with engine revolutions per minute (rpm).
- ▶ **REDUCED NOISE:** Electric motors are quieter than Diesel engines and there are no engine-induced vibrations on-board.
- ▶ **ZERO EMISSIONS:** When running, battery operated vehicles do produce zero tailpipe emissions.







## SHUTTLEWAGON ELECTRIC RAILCAR MOVERS PRODUCT RANGE

MODEL	MAX TRACTIVE EFFORT	MAX TOWING/ PULLING CAPACITY	ELECTRIC MOTORS	BATTERY	MAX SPEED	WEIGHT	DIMENSIONS
	lbs	tons	HP	Ah / V	mph	lbs	L x W x H
SWXe-5	1,125	110	2.7	240 / 48	1.5 – 2.5	4,500	5'x9'10"x1'8"
SWXe-16	3,600	310	9	420 / 80	1.2 – 3.2	7,500	8'6"x7'9 1/2"x6 1/2'
SWXe-25	5,600	525	18.3	700 / 80	1.2 – 4	11,872	9'10"x7'10 1/2"x8'5"
SWXe-32	7,200	740	30	1,000 / 80	2 – 3.5	15,232	10'2"x7'10 1/2"x8'6"
SWXe-50	11,250	1,000	43	1,000 / 80	2 – 4	23,520	13'x7'6"x8'6"
SWXe-90	22,000	2,000	2 x 27	2 x 1,000 / 80	3.5 – 10	46,000	16'5"x8'4"x8'6"
SWXe-120	27,000	2,500	2 x 40	2 x 1,400 / 80	3.5 – 10	62,000	26'x8'4"x11'6"
SWXe-160	36,000	3,200	2 x 54	3 x 1,400 / 80	3.5 – 10	66,000	26'x8'4"x11'6"
NVXe	45,000	4,000	155 hp cont./230hp intr.	200kWhLi-ion	16	67,000	24'6"x10'x11'9"

WORKING TO INNOVATE AND UTILIZE NEW TECH  
PRODUCTS THAT ARE SAFE, EASY TO USE, AND T

# CUSTOMER DEDICATION



Shuttlewagon is dedicated to creating partnerships with our customers.

**PRE-SALES ASSISTANCE:** During the initial meeting, Shuttlewagon rail specialists will explore your company's specific needs including your unique application, environmental requirements, plus training and support needs. This thorough analysis will enable Shuttlewagon to recommend a solution that fits not only your specific requirements but also your budget.

**EQUIPMENT SELECTION:** After the initial consultation is complete, Shuttlewagon specialists will create a solution-based plan that includes recommendations for equipment, training, support, service and parts.

**CONTINUED POST-SALE SUPPORT:** Shuttlewagon's commitment doesn't stop once the first tow is made -- we continue to provide you with training, parts and maintenance support for the life of your railcar mover.

TECHNOLOGY TO CREATE THE HIGHEST QUALITY  
SOLUTIONS THAT IMPROVE YOUR BUSINESS.





**ABOUT US:**

Shuttlewagon is a direct-to-market provider of rail-based car handling solutions. Whether you require equipment, service support, aftermarket parts or various on-site services, Shuttlewagon is available to implement the right solution at the right moment in time so that your operations continue to propel your business forward.

Outside the United States, Shuttlewagon, Inc. is partnered with key distributors in Canada and Mexico as well as representatives and agents elsewhere.

**CONTACT US:**  
816-767-0300

- Service: Press 1
- Parts: Press 2
- Technical Support: Press 3
- Sales: Press 4
- Certified Operator Training: Press 5

Shuttlewagon reserves the right to amend the data contained within this brochure at any time



SHUTTLEWAGON.COM



