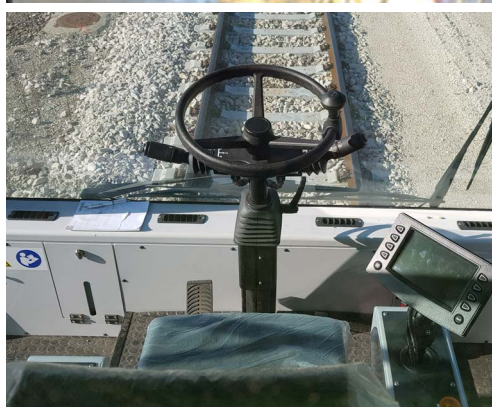
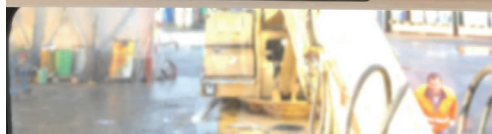
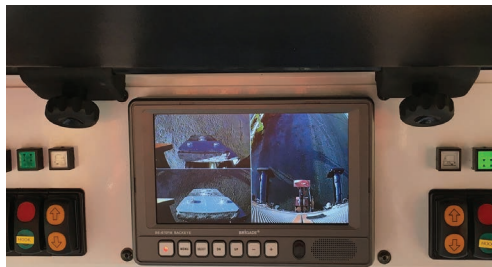


SWXe-90

Specifications



UP TO
2,000 TON
PUSHING/ PULLING
CAPACITY
Tractive Effort: 20,000 lbs (89kN)
single coupled without weight
transfer to loaded or empty railcar.



- **LOW OPERATING COSTS**
- **LOW MAINTENANCE COSTS**
- **PERFORMANCE**
- **REDUCED NOISE**
- **ZERO EMISSIONS**

For Narrow or wide applications: Please consult with factory.
*Note: Tractive effort may vary with rail and weather conditions.
Dimensions and Weight do not include optional equipment.
Specifications are subject to change without notice.

SWXe-90 General Specifications

Drawbar Pull	20,000 lbs
Pushing/Pulling Capacity	12,000 Tons
Motor	2x35
Battery	2 x 1.000/80 Ah/V
Max Speed	3.5 – 10 mph
Road Tires (mm)	Pneumatic Tires 10.00xR20
Road Braking System	n°4 Disc 391, n°2 Disc 350, Parking Brake
Rail Wheels (mm)	4 x 410
Rail Braking System	Same for road braking system
Road Turning Radius (m)	10,5 with 2 steering wheels
Air Train (l/min)	1,500
Air Tank (l)	2x200
Weight	34,000 lbs
Dimensions (LxWxH)	16' 5" x 8' 4" x 8' 6"
Axles	Heavy duty axles, planetary-type drive axles. Mechanically locked differentials in both front and rear. Full-time four-wheel drive.
Frame	Fabricated from SS355 cold rolled steel plate
Rail Gear	Four, 16" (410mm) diameter Colmar profile hardened and tempered steel guide wheels; Rail gauge; 56 1/2" (1435mm)
Couplers	Depending on the application
Brakes	Braking system with two independent circuits, one acting on the front axle, the other on the rear, served by hydraulic pump flanged to the "auxiliary" motor, 3 security accumulators able to guarantee at least 6 brakes at full power even in case of loss of hydraulic power. Parking brake with springs, negative acting on independent disk on both the front and rear axle. Emergency pump to release the brakes in case of breakdown.
Cab	Steel cabin completely closed with lockable door. 360-degree cab visibility.
Electrical	80 volt for the drive line. 24 volt electrical system for the auxiliary.
Warning Signal	One electrical horn. Back up alarm for on-road operation.
Tires & Rims	23x10-12, Super elastic solid tires
Hydraulic Reservoir Capacity	6.6 gal
Air Tank Capacity Rail Brakes	N/A
Vehicle Brakes	Hydraulic

SHUTTLEWAGON ELECTRIC RAILCAR MOVERS PRODUCT RANGE

The compact electric series are easy to operate, require low maintenance, and are efficient and powerful enough to handle the most demanding applications. Shuttlewagon's compact electric models range in power from 310 tons to 4,000 tons of towing capacity. For more robust applications requiring battery power, the Navigator NVXe can move up to 40 loaded or empty railcars.

MODEL	MAX TRACTIVE EFFORT	MAX TOWING/PULLING CAPACITY	ELECTRIC MOTORS	BATTERY	MAX SPEED	WEIGHT	DIMENSIONS
	lbs	tons	HP	Ah/V	mph	lbs	L x W x H
SWXe-5	1,125	110	2.7	240 / 48	1.5 – 2.5	4,500	5' x 9' 10" x 1' 8"
SWXe-16	3,100	310	9	420 / 80	1.2 – 3.2	7,500	8' 6" x 7' 9 1/2" x 6 1/2'
SWXe-25	5,250	525	18.3	700 / 80	1.2 – 4	10,600	9' 10" x 7' 10 1/2" x 8' 5"
SWXe-32	7,400	740	30	1,000 / 80	2 – 3.5	13,600	10' 2" x 7' 10 1/2" x 8' 6"
SWXe-50	10,000	1,000	43	1,000 / 80	2 – 4	21,000	13' x 7' 6" x 8' 6"
SWXe-90	20,000	2,000	2 x 27	2 x 1,000 / 80	3.5 – 10	34,000	16' 5" x 8' 4" x 8' 6"
SWXe-120	26,000	2,600	2 x 40	2 x 1,400 / 80	3.5 – 10	46,000	26' x 8' 4" x 11' 6"
SWXe-160	32,000	3,200	2 x 54	3 x 1,400 / 80	3.5 – 10	62,000	26' x 8' 4" x 11' 6"
NVX-E	45,000	4,500	155 hp cont./ 230 hp intr.	200kW Li-ion	16	67,000	24'6"x10'x11'9"

Efficient • Economical • Environmental

• Low Operating Costs

Electric vehicles are dramatically cheaper to fuel than their diesel counterparts. The cost of the electricity has remained fairly static over the last decade, whereas the global oil market has caused the average price of gasoline to rise, drop, spike, dip, and rise again over the same time period.

• Low Maintenance Costs

Despite being an advanced technology, electric vehicles are remarkably simple to maintain. Electric motors have fewer moving parts compared to diesel engines, and they do not require changing filters or hydraulic oil.

• Performance

An electric engine generates instant torque whereas an internal combustion motor has a curve of torque that increases in tandem with engine revolutions per minute (rpm).

• Reduced Noise

Electric motors are quieter than diesel engines and there are no engine-induced vibrations on-board.

• Zero Emissions

When running, battery operated vehicles produce zero emissions.